



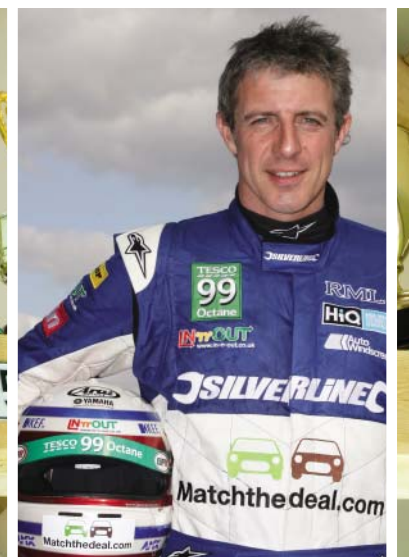
sensible heat case study

Jason Plato

sensible heat
ADVANCED
HEATING
CONTROLS



Honeywell



case study

sensible heat puts Jason Plato's home on the fast-track to effective heating control

Berkshire-based home automation company, Interactive Homes, has called on the expertise of heating control specialist Sensible Heat to help deliver a fully integrated and efficient smart home system for the home of British racing legend Jason Plato.

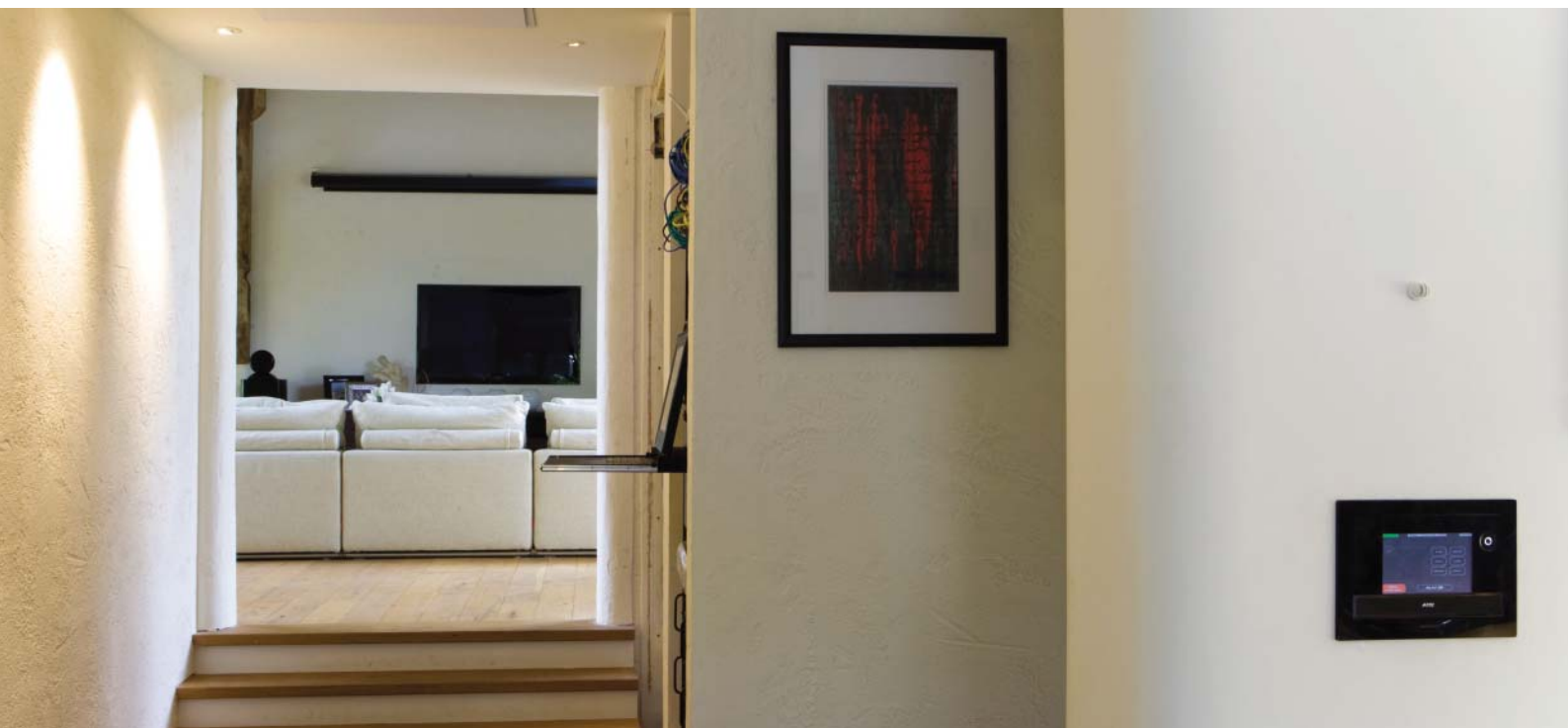
Winner of the British Touring Car Championship in 2001 and 2010, Jason cuts a well-known figure in British motor sport and also works as a presenter on Channel 5's *Fifth Gear* show. In 2006, Jason purchased a 16th Century barn conversion just outside of Oxford and commissioned Interactive Homes to renovate the building, equipping it with state of the art entertainment and heating control.

The five bedroom family home already featured extensive underfloor heating. However, the control system meant to operate the heating had not been properly designed and installed. As a result, the underfloor heating had never

functioned correctly – the system was slow to respond, the right comfort levels were difficult to achieve and energy was being wasted. Justin of Interactive Homes turned to Sensible Heat for assistance.

"In the first instance, we were looking for a control solution that actually worked effectively with underfloor heating" says Justin. "From this point, the client wanted to be able to integrate operation of the heating with the AMX system that we were using to control the entertainment and lighting systems in the property. He was also very clear that he didn't want the interior of the barn destroyed by any unnecessary wall clutter".

Sensible Heat has provided a





comprehensive, discreet and versatile solution built around its proven Hometronic wireless control technology. The system extends to twelve zones in total, controlling wet underfloor heating in the ground floor living areas alongside radiators in the upstairs master gallery space. The Sensible Heat technology also controls the hot water services in the home, comprising a large domestic hot water cylinder, the hot water circulation pump and the towel rail circuit as well as electric underfloor heating mats in the property's bathrooms.

The Hometronic system is interfaced to the main AMX control network using a Web Interface. Developed by Sensible Heat and AMX, this provides a relatively

simple, standard way of interfacing AMX to the HVAC system, without any requirement for Interactive Homes to create a special software driver at their own expense. All the installer has to do is decide on the end-user screen displays that they want, and link these to the "driver" code inside the AMX processor.

By accessing any one of the property's AMX Modero touchscreens, Jason can thus display and adjust individual settings within each of the heating zones.

Discreet Thimble Sensors blend into the background



The Sensible Heat system provides very precise time setting and temperature control of the underfloor heating to optimise comfort levels and boost fuel efficiency. A special eco mode maximises energy efficiency still further. Jason can also select any one of the pre-programmed 'Lifestyle' routines for different usage modes, (such as, At Home; Away; Summer; etc), so the barn can be automatically placed into a chosen comfort setting at the touch of a button.

Using the Web Interface, Jason can access the heating control system from any PC via the internet. It can also be operated as stand-alone technology via a manual override which enables Jason



Behind the scenes – The Hometronic Manager lives in the plant room with the boiler, hot water cylinder and underfloor heating manifold

Sensor transmitters in the plant room are 'wired' to thimble sensors on the wall in each room



and his family to control the system directly. So, in the event of a problem or failure with the AMX system, the heating can still be controlled independently without any problems.

The Hometronic System was simple to install with Sensible Heat's manifold control gear retrofitted to the underfloor heating system. Meanwhile, discreet thimble sensors were wall-mounted in each zone to measure temperature. These are wired to hidden transmitter units which communicate their readings back to the control system, ensuring minimal new wiring was needed. This wireless communication proved to be a major installation time and cost saving benefit in a property characterised by stone

walls and solid oak and concrete flooring. An additional exterior light and temperature sensor provides useful weather condition information to the AMX touchscreens.

Interactive Homes has seamlessly integrated the heating control with operation of all the audio-visual and lighting systems installed at the property. The living room doubles as a cinema room where a drop-down projector and screen are recessed into the ceiling. Floor-standing, ceiling and wall speakers by KEF are fitted throughout the property, whilst a Lutron Homeworks system automates lighting throughout the barn.

"The Sensible Heat part of the project has delivered on everything that

we and the client asked for" sums up Justin. "We have brought the existing underfloor heating under accurate, efficient control to create a comfortable living environment for Jason and his family. Using the web interface, we have integrated the heating control with the other sub-systems so that it can all be operated from the AMX touch-panels. It's important that we also have the back-up of independent control should we need it."

The audio-visual hub





“Finally, the visual impact of the Sensible Heat system is minimal. All that’s on show are the thimble sensors which are barely noticeable at all. We also have the capability to extend the heating control beyond the barn to

Jason’s garage and out-buildings, when the client wants us to – it’s a great solution, perfect for the job, and the client is delighted!”

One of the AMX touchscreens



Honeywell

sensible heat case study

A Sensible Heat Hometronic system is capable of controlling a wide variety of HVAC equipment including radiators, underfloor heating, boilers, hot water and air-conditioning systems. The Hometronic system is proven to bring dramatic improvements in comfort levels for the homeowner as well as energy savings in the region of 30%. As well as AMX a Hometronic System can be easily integrated as part of a whole house automation system run by Crestron, Netstreams, Control4, Savant or RTI. The Hometronic Manager can also be accessed remotely using wireless technology via the WebManager or a mobile phone. Based in Lewes, East Sussex, Sensible Heat operates nationwide across the UK and Ireland, providing a comprehensive design advice, supply, commissioning and after sales/technical support service.

For more information and further details, visit www.sensibleheat.co.uk or telephone +44 (0)1273 475834.

